

Our size enables us to adhere to that timeless and rewarding educational process -- the apprentice/master relationship.

It is involvement on this level that infuses each and every student with the practicalities of creativity.



Wendell Castle

**The Wendell Castle School**  
18 Maple Street, Scottsville, New York 14546  
(716) 889-1521

### **Studies in the Fine Art of Woodworking**

1986-1988 Catalog  
Associate in Occupational Studies Degree Program

Accredited by the New York State Board of Regents

The Wendell Castle School does not discriminate on the basis of race, sex, color, religion, creed, national origin, or handicap.

This school is authorized under Federal law to enroll nonimmigrant alien students.

The Wendell Castle School is a unique 501-c-(3) not-for-profit arts education institution. Our students, however, are not unique in their financial need. Contributions to the Wendell Castle School Tuition Assistance Scholarship Fund are most welcome. They are also gratefully acknowledged and they are fully tax deductible.

©Wendell Castle School, 1986



# CONTENTS

|    |                            |  |
|----|----------------------------|--|
| 5  | <b>Introduction</b>        | History<br>Faculty & Staff   |
| 10 | <b>The Facility</b>        | Location<br>The Shop<br>Studio Use<br>Library<br>Recreation  |
| 12 | <b>Course of Study</b>     | A.O.S. Degree Program<br>First Year<br>Second Year<br>Attendance<br>Grades & Graduation<br>Requirements  |
| 16 | <b>Additional Programs</b> | Third Year<br>Auxiliary Studies Program  |
| 18 | <b>Admissions</b>          | Requirements<br>Transfer Credit<br>Procedure   |
| 19 | <b>Et Cetera</b>           | A Unique Opportunity<br>Lecture Series<br>Workshops<br>Student Shows<br>Housing<br>Food Service<br>Employment Placement<br>Placement Census<br>Map |



## Pocket **Financial Information**

|                                 |
|---------------------------------|
| Tuition, Fees & Deposits        |
| Tuition Assistance Scholarships |
| Refund Policy                   |
| Additional Expenses             |
| Sample Budget Estimate          |
| Financial Aid                   |

*“Design does not happen in isolation; design is a process of cultural assimilation. To be successful, the contemporary furniture maker must combine an advanced knowledge of the high technology of fine woodworking with a thorough understanding of the history and philosophy of design.”*

#### **PRESIDENT'S STATEMENT**

The Wendell Castle School was founded in the belief that an alternative educational institution should exist for the benefit of those who wish to embrace furniture design and fine woodworking...not only as a profession, but as a way of life and a means of self-expression. This desire is often accompanied by educational goals which can best be served by a single-purpose institution; one with a specialized program designed to respond to individual needs. Accordingly, the WCS continues to adhere to the challenge of remaining small in order to provide the personal attention students require for creative growth.



At the Wendell Castle School, a diversity of programming provides woodworking students with the broad scope of experiences they need to succeed professionally. An artist is not simply a person with ideas, but rather a person with the skill to manifest these ideas. Thus, the educational aim of the WCS is to allow our students to become independent technically and aesthetically. We accomplish this through our unique academic program, a faculty young in spirit and rich in experience, and an atmosphere congenial to individual growth.

*Wendell Castle*

Wendell Castle  
Wendell Castle School





4



## HISTORY

The Wendell Castle School is a two-year occupational studies program in Furniture Design and Fine Woodworking. The school enrolls aspiring furniture makers, both men and women, with differing educational backgrounds from this country and abroad. Most students, but not all, have prior college preparation and many have earned degrees. This program serves serious students who can benefit from hands-on experience combined with a fine arts curriculum.

Each class undertakes an instruction/apprenticeship program combining woodworking techniques with art and design, history of furniture, freehand and technical drawing, plus valuable experience in dealing with both private and professional clients and the media.

In September of 1980, the Wendell Castle School enrolled its first class which was composed of 12 students from 8 states. Enrollment quickly grew to the current level of 30 students, where it will remain. The entering class of 1985 was composed of 14 students from 10 states.

The faculty of the WCS is committed to the apprenticeship system, which is reflected in our 7:1 student/instructor ratio, resulting in an average class size of 14. This founding precept of individualized contact with the students remains a philosophical mainstay of the program.

By February, 1982, the WCS was chartered by the New York State Board of Regents, followed in October, 1982, by federal government designation as a

not-for-profit educational institution. In May, 1983, the New York State Department of Education granted accreditation, and authorization to confer the degree of Associate in Occupational Studies (A.O.S.). The Wendell Castle School curriculum is registered by the New York State Education Department.

*“Our instructors are highly-skilled, creative producers—each of them on the leading edge of international furniture design. Their combined knowledge of design history, their ability to visualize in multiple dimensions, their love and understanding of wood and fine materials, their expertise in dealing with a variety of clients—all this is passed along to each student.”*



His works are exhibited in the permanent collections of the Metropolitan Museum, Museum of Modern Art, Smithsonian Institute, Nordenfieldske Kunstindustrimuseet, Museum of Fine Arts – Boston, and the Philadelphia Museum of Art.

## FACULTY & STAFF

### FULL-TIME INSTRUCTORS

**Wendell Castle**, President/Director. BFA, Industrial Design, MFA, Sculpture, University of Kansas; Honorary DFA, Maryland Institute of Art. Artist-In-Residence and Professor at the School for American Craftsmen, Rochester Institute of Technology. Wendell Castle lectures internationally, and has authored a book and numerous articles on design and fine woodworking.

**Stephen Proctor**, Dean for Instruction. BA, Kingston upon Thames, MA, Royal College of Art, England. Joined Wendell Castle, Inc., in 1974. He has authored technical articles, lectured, directed workshops and exhibited extensively in the United States and abroad. As Dean, Stephen Proctor assumes primary academic leadership of the Wendell Castle School.

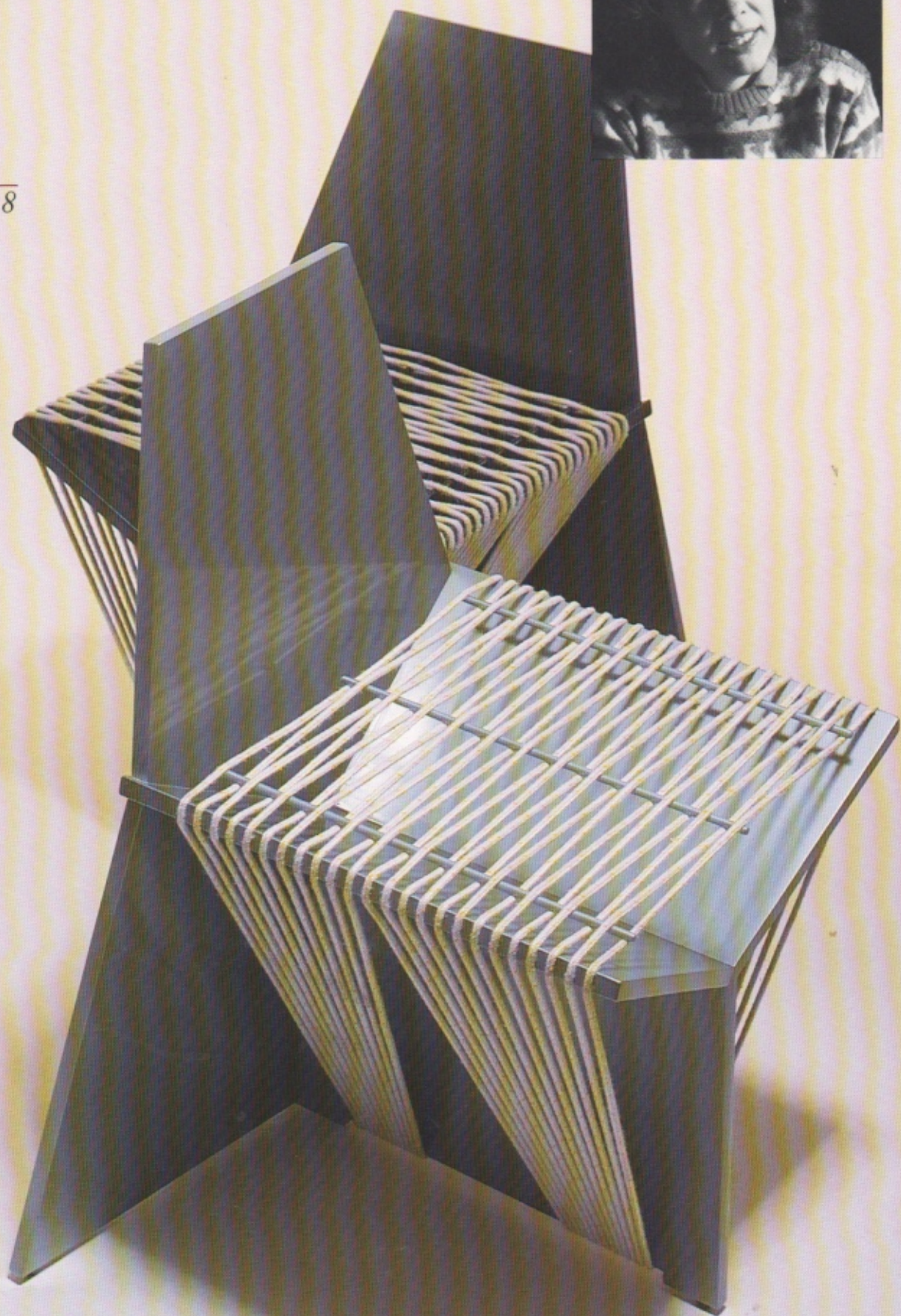
“Accomplishment in our efforts requires more than fine craftsmanship. It requires an understanding of the logic behind the way in which it is done.”







8





**Denise Heischman**, Instructor of Drawing and Design. BFA, Miami U., Oxford, Ohio. Drawing, The Ruskin School, Oxford, England. MFA, Rochester Institute of Technology. In addition to the Drawing & Design curriculum, Denise Heischman teaches one afternoon each week in the bench room, assisting in an active transfer between work in the sketchbook to that at the workbench.

"An understanding of the elements and aesthetics of design and drawing allows the furniture designer the freedom to create his own original vocabulary of forms."

**Freddie Baier**, Instructor, Furniture Design and Woodworking. Dip. A.D., Birmingham College of Art, MA, Royal College of Art, England. Mr. Baier joins the Wendell Castle School this year after a successful career in furniture design in Great Britain. He will be responsible for teaching the second year curriculum.

"There are three high points in the creation of a new piece: first, coming up with the idea, then

the moment when you know exactly how you can make it work, and finally, there is the moment when you can show it. With each piece, I have tried to extend the boundaries within which I work and, hopefully, of the field as a whole."

#### PART-TIME FACULTY

**Graham Campbell**, Instructor, Drafting. AOS, Wendell Castle School

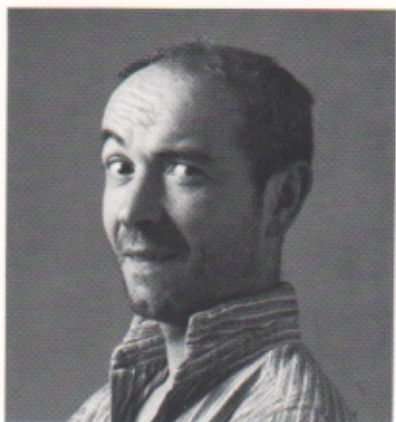
**Edward Cornwell**, Instructor, Furniture History

**Peggy Fleming**, Librarian. BA, University of Rochester, MLS, SUNY/Geneseo

#### STAFF

**Lanham Deal**, Administrator/Director of Special Projects/Registrar.

**Deborah DePascale**, Business Coordinator/Financial Aid Officer/Bursar.



*"Within the framework of our curriculum, our small size allows us the flexibility to respond to the individual educational goals of our students, whether their interests lean to art or industry. The Wendell Castle School is committed to maintaining its position of leadership in the field of designer crafted furniture."*

10

## THE FACILITY

### LOCATION

The Wendell Castle School is located in the village of Scottsville, a lovely community located just seven miles south of Rochester, New York State's third largest city.

Within walking distance of the school are grocery stores, banks, churches, post office, and several restaurants.

Only minutes from Scottsville, Rochester provides the cultural benefits of the Rochester Philharmonic Orchestra, The Memorial Art Gallery, Strong Museum, GeVa Theater, and numerous private art galleries, all within access by public bus service. Educational pursuits are enhanced by the school's close proximity to institutions such as the University of Rochester, the Eastman School of Music, and the Rochester Institute of Technology. Immediately to the south of Scottsville lie open farmlands

and the horse country of the Genesee Valley, the recreational opportunities of the Finger Lakes Region, Letchworth State Park ("The Grand Canyon of the East"), and several nearby ski areas.

### THE SHOP

The Wendell Castle School is housed in an historic renovated bean mill. Several modern additions, combined with the older drawing studios, provide over 8,000 square feet of floor space for work and instruction.

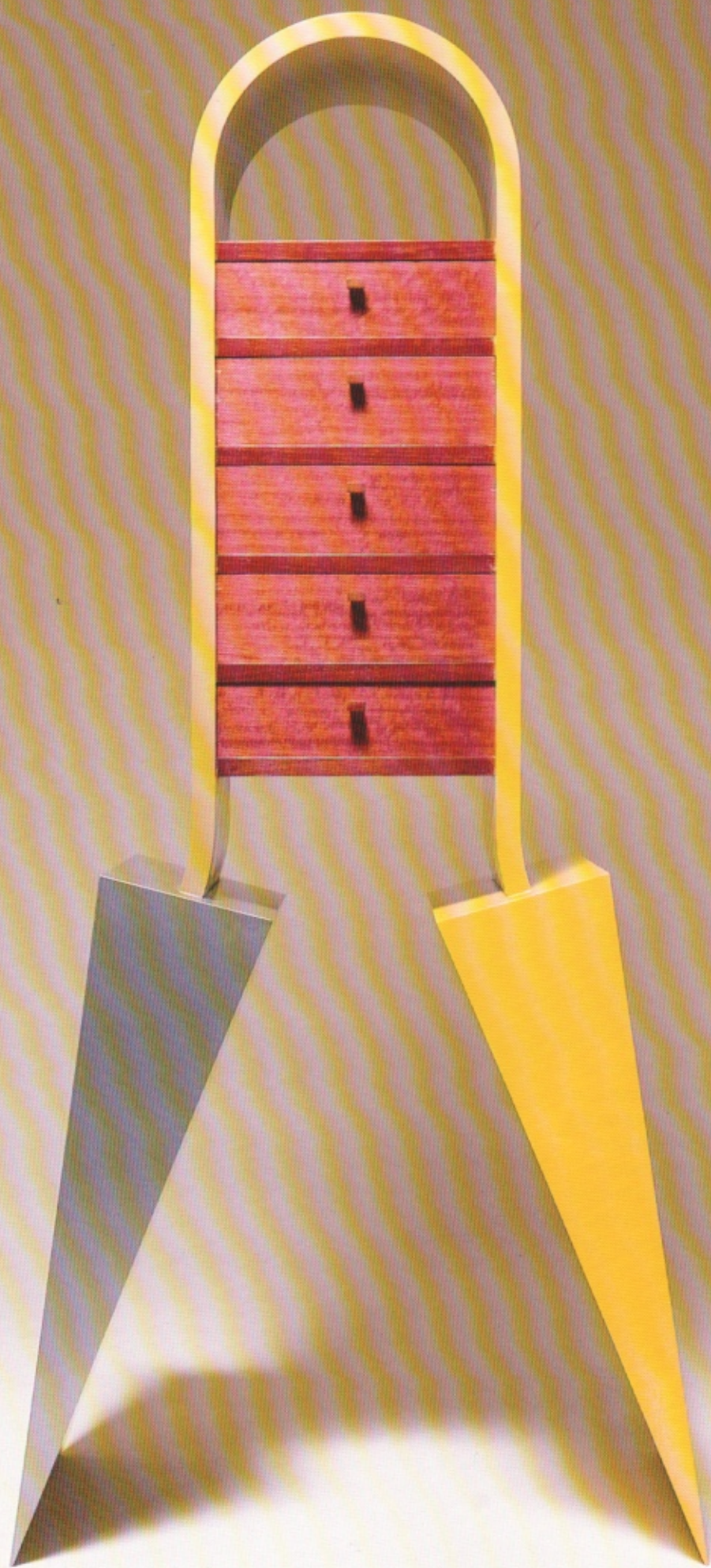
Each student is provided with an individual European-style workbench, tool locker, overhead lumber rack, and a drafting or sketching table. The Machine

Rooms are equipped with the following industrial-quality power tools:

8', 4', and 3' Oliver Lathes  
16" Crescent Jointer  
6" Rockwell Jointer  
24" SCM Planer  
34" American Bandsaw  
36" Bandsaw  
16" Tannowitz Table Saw  
16" Yates-American Table Saw  
14" American Table Saw  
10" Rockwell Table Saw  
American Twin Spindle Shaper  
Tool Grinders  
16" Radial Arm Saw  
Pneumatic Sanders  
Belt Sanders  
Yates- American Disc & Drum Sander  
Buffalo Drill Press  
Powermatic Mortising Machine  
4' x 8' Veneer Press  
Air & Electric Hand Tools

### STUDIO USE

The WCS is equipped with a lighted parking lot and a combination lock so that the facility is available to students on a 24 hour/day, 7 day/week basis. Because of noise level and safety regulations, power tool use is restricted to the hours of 7:00 a.m. to 10:00 p.m.



*“A high level of diversity in our program provides students with the background they need to translate their ideas into function. Equally important, this diversity produces furniture makers with differing points of view. Good design can exist in the \$500 piece of furniture as well as in the \$50,000 piece.”*

#### **LIBRARY**

The Wendell Castle School library, an important educational resource, houses over six hundred books and exhibition catalogs and subscribes to key fine arts periodicals. In addition to these print resources, the WCS has developed a small slide library representing both contemporary work and historical examples.

#### **RECREATION**

Attractively landscaped grounds surround the Wendell Castle School, providing space for outdoor grilling and relaxing the newly-constructed timber frame gazebo. Sports facilities on the grounds include a volleyball court and a lighted platform tennis court. There are softball diamonds, basketball courts and a skating rink in Johnson Park, just across the street.

#### **COURSE OF STUDY**

##### **A.O.S. DEGREE PROGRAM**

Generally speaking, the first year of study at the Wendell Castle School is devoted to technique for hand and machine tool working, and to the development of skills in drawing and design. Drawing instruction is stressed throughout the student's two years at the WCS, because it is considered an essential tool for the serious woodworker as well as for the designer. Study in the second year focuses on more difficult technical and design problems in order to enhance the student's unique approach as a furniture maker.

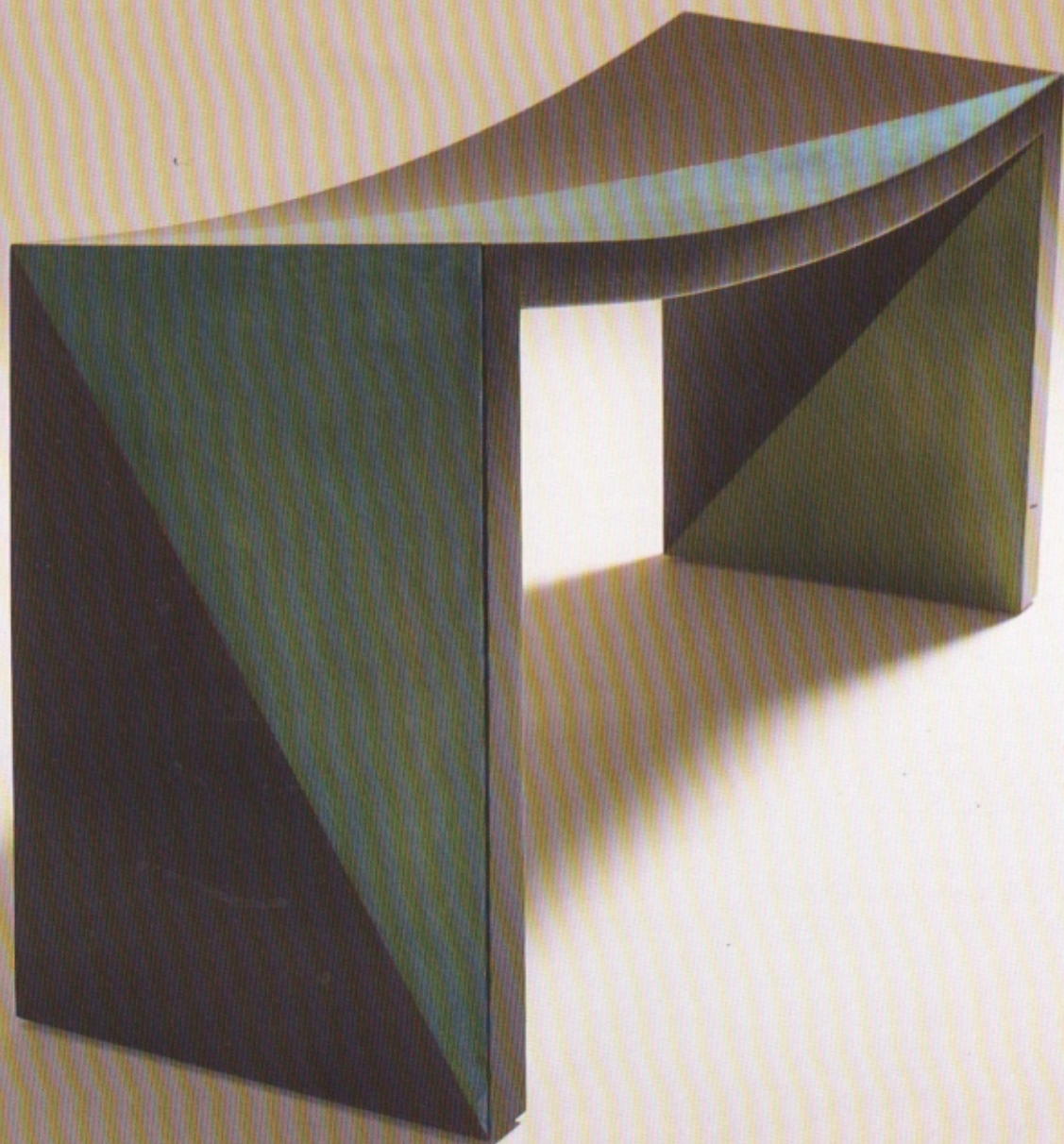
Our primary goal is to assist the student in fully developing his or her creative capacity with an understanding of the roles that woodworking and furniture design play in contemporary culture and industry. While the curriculum described below is not intended to prepare the student for a predetermined position in woodworking, it does encourage the highest level of technical proficiency.

#### **FIRST YEAR**

##### **Fine Woodworking & Furniture Design I**

24 Credits/Year

This course assumes no prior woodworking experience, as students undertake a program of concentrated instruction in the Basics: Wood Technology, Hand Tool Theory & Technology, as well as the sharpening, adjustment and use of hand tools. The first semester is devoted, through the construction of practice joints and three individually designed projects, to the development of skilled hand tool use. In the second semester, students are introduced to woodworking machines, learning their safe use and technical vocabulary in addition to their potential for use in artistic expression. Students may expect to complete five pieces in FW & FD 1, and will have developed a solid foundation for professional woodworking.





### **Two & Three Dimensional Design**

4 Credits/Year

The objective of 2D/3D Design is to provide students with a set of criteria by which to evaluate their work, and the work of others.

The elements of design; color, form, balance, composition, line, texture and pattern are studied individually. A language develops from these investigations which is the language of design.

This foundation course allows the student to make sound design decisions throughout the furniture making process; from the initial conceptualization to the photography. The ability to see is enhanced, advancing the techniques of accomplished artists, and providing beginners with skills necessary to express their ideas visually.

### **Rapid Viz & Technical Drawing**

4 Credits/Year

Rapid Viz is a new technique which develops quick sketching skills, thus allowing students to effectively capture, explore, and refine design concepts. Combined with technical drawing, this course develops all the skills necessary for the effective and accurate design communication.

### **History of Furniture**

4 Credits/Year

An understanding of the evolution of furniture design is essential to the appreciation of design aesthetics. The course provides an historical perspective, from pre-history through the Middle Ages to the year 1900 in the first semester, with the second semester devoted to 1900 through the present.

## **SECOND YEAR**

### **Advanced Fine Woodworking & Furniture Design II**

24 Credits/Year

This is an intensive studio experience, focusing on both aesthetic and technical problems. Specific techniques (wood turning, veneering, stack-laminating, or production methods, for example) are explored as the instructional format of learning through designing and producing continues. Here the creative capacities of the furniture maker come under closer scrutiny, with human factors and interior design problems set by the staff. Students respond with a variety of solutions which exercise their creative imagination.

### **Freehand Drawing II**

4 Credits/Year

Drawing skills are strengthened following the first year program. Rendering and other professional presentation techniques are developed.

### **Professional Practices**

4 Credits/Year

This important seminar is designed to provide first-hand experience in preparation for professional life as a furniture designer/maker. Ranging from instruction in the electrical wiring of shop machinery, to selling one's work through galleries, this course reflects many aspects of life's realities.

### **ATTENDANCE**

The WCS curriculum has been designed specifically for the serious student of furniture making. Such an intensive studio experience often involves 70-80 hours per week; 50 hours per week being considered the minimum. Regular class attendance is expected. Problems of excessive absence will be referred to the director, who shall determine what action should be taken; up to and including dismissal from school.

In recognition of the student's rights, he/she must have been given one written warning before being dismissed from school. The student will have time to respond to the warning and correct the situation. The school has the right to expell a student whose conduct or academic standing is regarded as unsatisfactory.





*"It is in the school's best interest to keep the concerns of our students at heart. Some of our students do not intend to become artisans, but are interested in careers as designers. Our comprehensive two-year program provides our students with a diversity that affords them flexibility. In flexibility lies choice."*



#### **GRADES AND GRADUATION REQUIREMENTS**

Semester grades for each course are given on a Pass/Fail basis, with a written evaluation by the faculty. Individual instructors may choose to assign letter grades in their classes. Both the grades and evaluation become part of the student's permanent record. An Incomplete may be given, indicating that the student has conditionally passed with the expectation that the course work will be completed satisfactorily by the end of the following semester. At least 64 credit hours of course work, including 48 credit hours of Woodworking and Furniture Design, must be earned for graduation. Ninety percent of the students entering the two-year program in September, 1985 are expected to complete the program in May 1987.

#### **ADDITIONAL PROGRAMS**

##### **THIRD YEAR**

Upon approval from the Dean, a student may elect to attend the Wendell Castle School for a third year after graduation. The third year program enables a student to continue advanced work in

the favorable environment of the school. The curriculum of this "apprenticeship" year is customized for the student by the Dean.

##### **AUXILIARY STUDIES PROGRAM**

The Auxiliary Studies Program (ASP) has been created for the advanced furniture maker who may desire to hone skills, explore a specific technique, or simply regenerate ideas in an atmosphere conducive to learning. Although admission to the A.O.S. Degree program is restricted to those students enrolling in September, advanced students or professionals may begin study in the ASP at the beginning of each semester. Acceptance in the ASP is on the basis of a personal interview and faculty review. A portfolio is required. ASP students design their individual program of study in consultation with the Dean. Applications for this flexible program are accepted at any time of year.

For more information and a prospectus, please contact the Registrar.





## ADMISSIONS

### REQUIREMENTS

To be considered for admission to the Wendell Castle School, a candidate must be a graduate of an accredited high school or hold a high school equivalency diploma. Admission is based on the desire to excel, school and/or employment records, references and a personal interview. A portfolio of work in any medium, although not required, is most helpful in our evaluation.

Applicants for the A.O.S. degree program are admitted only at the beginning of the fall semester. The Wendell Castle School does not discriminate with regard to race, color, creed, religion, sex, national origin, or handicap in employment, recruitment, or

admission of students, as specified by federal laws and regulations. Continuation in the program is not automatic; students are evaluated each semester to determine if each should continue.

### TRANSFER CREDIT

Credit for previous education and/or training is given when it has been found to be applicable and appropriate. Inquires about specific credit transfer arrangements should be directed to the Registrar.

### PROCEDURE

To apply for admission, complete the application form and return to the Wendell Castle School, 18 Maple Street, Scottsville, NY 14546, along with the non-refundable application fee of \$35, high school or college transcripts, three letters of reference, and a portfolio of prior work in any media, if available. Upon receipt of a complete application package, the Faculty Committee will review the application and contact each applicant to set a time for a pre-admission interview. Applications for enrollment are accepted from January 1 through May 30. Admissions decisions are generally finalized by June 30.

## ET CETERA

### **From theory to reality — a unique opportunity!**

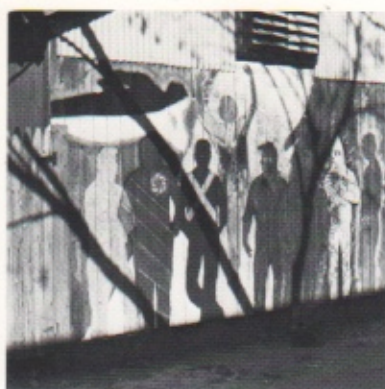
Wendell Castle, Inc., an internationally renowned design and furniture making business is located directly adjacent to the Wendell Castle School. Every Friday afternoon, Wendell Castle, Inc., is open to students so they may follow the progress of furniture construction, ask questions, and learn the details involved in operating a small workshop. This unique week-to-week exposure to the realities of maintaining a successful business composes an important part of the student's education.

### **LECTURE SERIES**

Each year, as a community service and in an effort to expose students to additional and diverse aspects of the furniture design and construction field, the school offers a series of evening lectures. Successful studio artists, publishers, gallery owners are among those who come to speak. The lecture series contributes to an awareness of the broad network of employment possibilities in furniture/design related fields.

### **WORKSHOPS**

Periodically during the school year, guest instructors are invited to give seminars in their particular fields of specialization. Past seminar topics have included: upholstery, marquetry, Japanese tools, turning and plane making.



### **FOOD SERVICE**

No formal food service is provided at the school. A kitchen is available for student use and there are several restaurants within walking distance of WCS.

### **EMPLOYMENT PLACEMENT**

The Wendell Castle School has developed a reputation with employers throughout the nation for producing well-qualified graduates. The school receives dozens of calls each year from businesses requesting contacts with suitable prospective employees. The rate at which these contacts are successful is reflected by the placement census.

### **PLACEMENT CENSUS**

Statistics compiled by the WCS indicate employment in wood-working-related fields at the rate of 82% for our graduates.

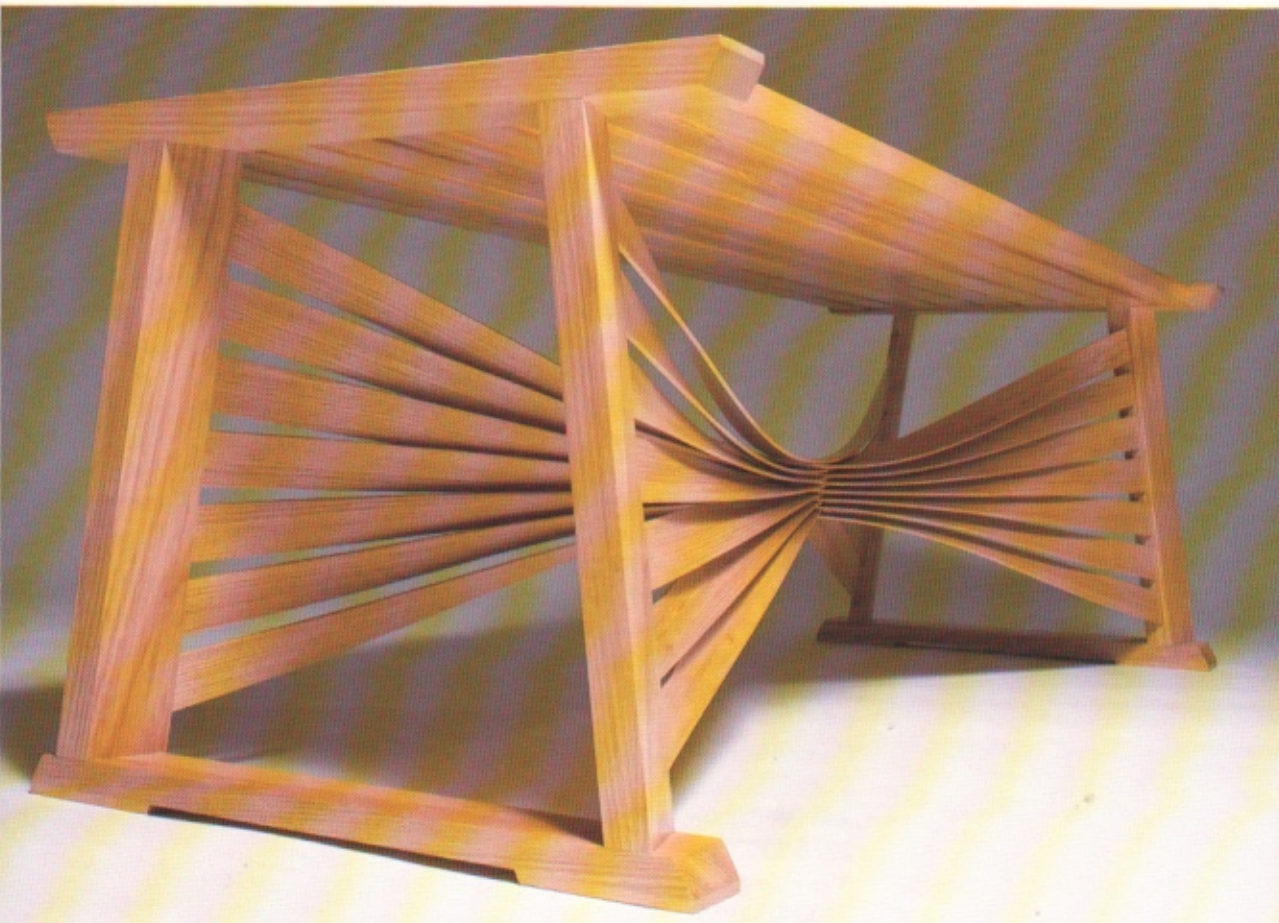
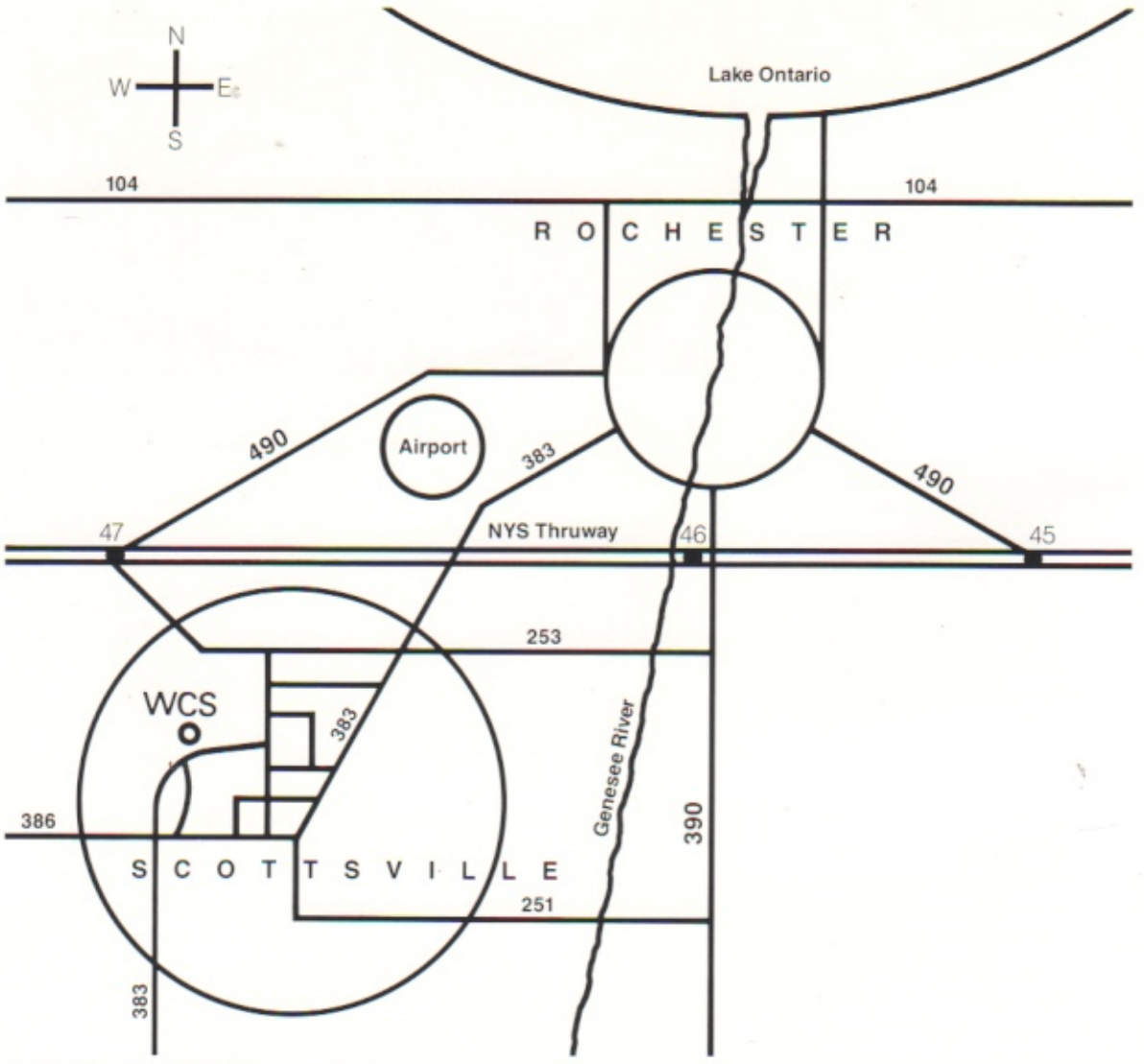
### **STUDENT SHOWS**

The Wendell Castle School student body is well known for producing imaginative work of exceptional quality. At the end of the school year, the best of this work is exhibited and offered for sale in a show at a prestigious gallery in downtown Rochester.

### **HOUSING**

Rentals are readily available in Scottsville and the neighboring areas. Students are responsible for securing their own housing, but the school regularly assists with information and suggestions. The current rates range as follows:

- Rooms with privileges  
\$125-\$150/Mo.
- Two BR Duplex or Apt.  
\$275-\$350/Mo.
- Two-Four BR House  
\$400-\$600/Mo.



**Designer/Craftsmen:**

Pg. 3 – James Nagel, "Chairs", 1985

Pg. 4 – Jeff Webster, "Cabinet", 1985

Pg. 7 – Jesse Goode, "Untitled", 1985

Pg. 8 – Charles Swanson, "Chairs", 1985

Pg. 11 – Thomas Berry, "Cupid's Alchemy Chest", 1985

Pg. 13 – Graham Campbell, "54 Bowl", 1986  
"Bench", 1986

Pg. 15 – Roger Beaudoin, "Side Chair and Lamp", 1986

Pg. 17 – Naomi Vogelfanger, "Cabinet", 1985

Pg. 18, (left) – Mark Gravino, "Tara's Stool", 1986

Pg. 18, (center) – Phillip Ehrgott, "Stool", 1986

Pg. 18, (right) – Naomi Vogelfanger, "Bench", 1985

Pg. 20 – Harold Moore, "Bench", 1985

**Graphic Design and color photography**  
Joan Harkness Hantz

**Project Director**  
Lanham Deal

The Wendell Castle School is grateful to  
Skip Hansford and Richard Sands for  
their contributions to this publication.